

2017 ROBINSON TOWNSHIP COMMUNITY RECREATION PLAN

April 12, 2017



2017 ROBINSON TOWNSHIP COMMUNITY RECREATION PLAN

Prepared for: Robinson Township Park Board and Robinson Township

RESOLUTION OF ADOPTION:

Park Board

Chairperson: Bernice Berens Vice-Chairperson: Eric Hayward

Secretary: Eric Hayward

Member(s): Nancy Esnaola, Mike Fraser

Board of Trustees

Supervisor: Kathryn L. Kuck Clerk: Chris Saddler Treasurer: Bonnie Hayward

Trustees: Travis Vugteveen & Bernice Berens

Deputy Clerk: Jennifer Sias Deputy Treasurer: Shelley Witte

2017 ROBINSON TOWNSHIP COMMUNITY RECREATION PLAN
CONTENTS

	Page
INTRODUCTION.....	1
COMMUNITY DESCRIPTION.....	2
Description and Location.....	2
Demographics, Housing and Income.....	3
Natural Features.....	4
Existing Land Use.....	4
ADMINISTRATIVE AND FINANCING STRUCTURE.....	5
Organizational Structure.....	5
Recreation Budget.....	6
Public Organizations.....	6
DESCRIPTION OF PLANNING PROCESS.....	7
RECREATION INVENTORY.....	8
Township Facilities.....	8
State Facilities.....	8
County Facilities.....	8
School Facilities.....	9
Private Recreation Facilities.....	9
Township Recreation Programs.....	12
GOALS, OBJECTIVES, AND ACTIONS.....	13
Physical Characteristics.....	15
ACTION PROGRAM.....	18
APPENDIX A.....	19
Community Survey.....	29
APPENDIX B.....	31
Concept Drawing of Park.....	31

INTRODUCTION

The 2017 Robinson Township Community Recreation Plan has been prepared by the Robinson Township Park Board. The Plan will serve as a guide for the Township management of park and recreational facilities and goals for future acquisition and open space preservation.

The Plan presents an assessment of Robinson Township's recreation needs and opportunities. Reviews of program accomplishments, demographic data and the results of the recently conducted Community Survey (Appendix A) will be the basis for these adjustments and are intended to be an integral part of the development process. The Plan considers the existing public and private facilities within the Township, the demand for an additional facilities to better suite current land and environmental conditions, and the means for funding this project during the course of the five-year development.

The 2017 Robinson Township Community Recreation Plan replaces the Plan adopted in 2006, 2011 and acts as a guide for the Township's leadership on park and recreation facilities in the coming years. The Plan also enables the Township to apply for Federal and State grant funds for parks and recreation facilities administered by the Michigan Department of Natural Resources and others.

COMMUNITY DESCRIPTION

Description and Location

Robinson Township is located in the northwestern portion of Ottawa County, west of Grand Rapids and southeast of Grand Haven. Figure 1 shows the location of Robinson Township.

Robinson Township has a total area of 39.5 square miles with 0.8 square miles of it being water. The northern border of the Township is the Grand River and bayous. The Township is mostly agricultural, but land availability is quickly fading as more people are building homes. Robinson Township was originally marshes, open fields, woodlands and wetlands but the land has since been drained and converted into housing plots, farmland and impermeable surfaces.

Robinson Township has a beautiful rural setting and is conveniently surrounded by urban communities of Holland, Allendale, and Grand Haven. Some of the locations within the Township, notably the Van Lopik and Limberlost developments, have proven to be unfit for residential use because of the high risk of flooding. There have been at least five major floods recorded since 1994 as well as other significant floods in the past 30 years. The most recent ice jam flood, reaching water levels of 18.3 feet in January of 2005, caused widespread evacuation and suspended occupancies for some homes. The flood affected 30 homes on Van Lopik, and 20 other homes on Limberlost according to the National Weather Services because of contaminated water sources, septic systems and a lack of gas and electric services. In 2005, the township received a 5.5 million dollar grant from FEMA to buy out residents in this area. The grant calls for areas purchased to be converted to open space for public recreation.

As the area around and within Robinson Township continues to increase in population growth, the community will see an increased need for recreational opportunities. Robinson Township would provide the perfect setting for a recreational area that showcase the natural wetlands and wooded areas found along the Grand River.



Figure 1. Robinson Township Location

Demographics, Housing and Income

As of 2010, Robinson Township had a total population of 6,084 residents, and of those residents 72% were adults. Robinson Township has a total of 2,238 housing units of which 28 units are used for seasonal or recreational use, and 462 of the units are currently vacant. Currently there is a density of 56 houses per square mile, and 154 people per square mile. Population growth between the 2000 and 2010 census years suggests that growth has slowed compared to previous decades (see Figure 2).

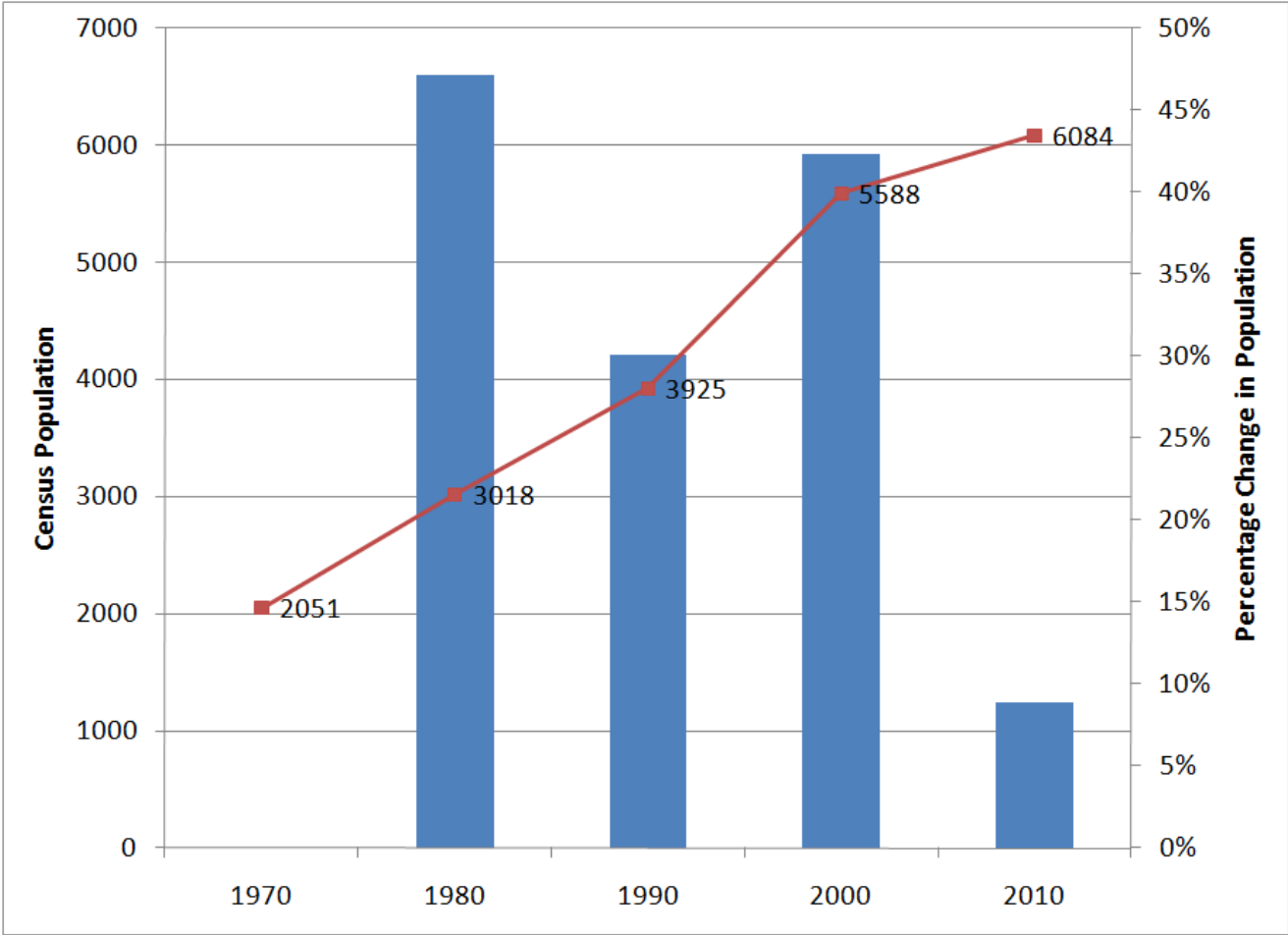


Figure 2. Census data from 1970 to 2010 for Robinson Township.

The median household income of Robinson Township according to the 2000 Census recorded the 1999 level at \$57,110. The most common industries for the Township members to work in are manufacturing, education and health care. Currently 78.7% of the township population (over 16 years of age) participates in the labor force.

Natural Features

The majority of Robinson Township (approximately 80%) is made up of agricultural and residential land. The Northern boundary of the township is defined by the Grand River. Other significant sources of water are a couple of lakes scattered across the Township. There are also four bayous located in the northwest portion of the Township, which are Stearns Bayou, Clark Bayou, Kirby Bayou (Ruby), and Connor Bayou. Located in the township are six rivers/creeks and one lake, which are Stearns Creek, Little Robinson Creek, Wolf Creek, Bass Creek, Bear Creek, Bass River, and Max Lake. Swamps are located alongside the bayous and rivers. Lastly, there are ditches and drainage systems scattered throughout the agricultural land in the Township for farming purposes.

M-231 Bridge Pathway

The seven mile roadway is one of only four bridges crossing the Grand River in Ottawa County. The massive Grand River Bridge is three quarter mile long, making it the seventh longest bridge in the State. The Bridge includes a designated pathway for bicycles and pedestrians that will connect pathways on the north and south side of the River and help create an inter-connected pathway network which spans the West Michigan Region. The Bridge Pathway has been officially named to honor a local historical figure, Stg. Henry E. Plant. Sgt. Plant was awarded the Congressional Medal of Honor in 1896 for his valor at the Battle of Bentonville during the Civil War, being the first person in Ottawa County to receive this distinction. His former farm is located on the M-231 route in Crockery Township.

In Robinson Township the pathway (bicycles and pedestrians) will connect to Connor's Bayou Parks to the west and Riverside Parks to the east. A parking area for pedestrians is proposed on property west of the M-231 bridge. Spoonville Trail – length???

Existing Land Use

Robinson Township's land is mainly used for residential (47.7%) and agricultural (41.7%) functions. The rest of the land is used for commercial purposes.

ADMINISTRATIVE AND FINANCING STRUCTURE

Organizational Structure

Robinson Township’s parks and recreations programs are administered by the Park Board, which was formed under the enabling Act 157 of 1905. Committee members are appointed by the Board of Trustees and have staggered memberships. The committee is directly responsible to the township Board of Trustees and serves in an advisory capacity.

The Park and Recreation Advisory Committee formulates park development plans, recommends construction projects and financing procedures, administers recreation programs and recommends maintenance operations and equipment needs for Township Board review, approval and execution. The official actions of the Township such as public hearings, implementation of projects, allocation of funds for grants or capitol projects or programs or the establishment of ordinances and related regulations and procedures are the responsibility of the Board with assistance from the various commissions and committees.

Figure 3 Organizational chart showing administrative structure of Robinson Township’s parks and recreation system.

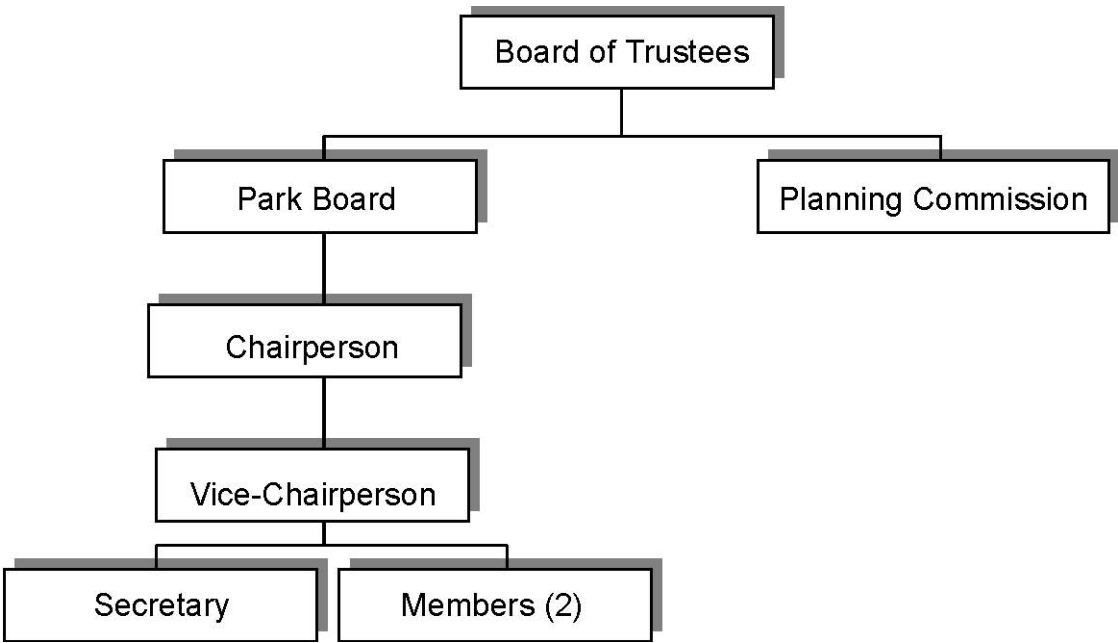


Figure 2: Robinson Township Parks and Recreation System

Recreation Budget

Robinson Township's recreation budget for 2017 is \$70,000. This budget helps maintain the Robinson Township Park and planning towards future recreation facilities. Currently, numerous volunteers are involved in the park and recreation programs, park improvement projects, and community projects. There are recreation programs directed and sponsored by Robinson Township.

The Township residents who are active in recreation programs participate through the following organizations:

Public Organizations

- Northwest Ottawa Recreation Authority (NORA) has an agreement with Grand Haven Public Schools as well as local governments that includes Robinson Township.
- Northwest Ottawa Recreation Authority (NORA) serves as primary sponsors with Ferrysburg, Grand Haven Township, Grand Haven City, Port Sheldon, and Robinson Township all making financial contributions to subsidize costs for area-wide participation. The sponsoring communities also participate as member representatives for planning and program approvals. Robinson Township is allocated two positions on the Board. Programs are primarily held at Grand Haven facilities with participation depending on the types of activities offered. The funding in the 2015-2016 year was approximately \$11,642.00.
 - Grand Haven Young Bucs (Baseball).
 - Youth Christian Soccer League
 - Christian Churches Co-ed Baseball League.
 - The City of Zeeland provides recreation programs that draw from a wide area around Zeeland, which includes Robinson Township.

DESCRIPTION OF PLANNING PROCESS

The planning process used to prepare the 2017 Robinson Township Community Recreation Plan involved four phases: data collection, analysis, needs identification, and plan development. The data collection phase involved collection and analysis of demographic data, including data from the 2010 U.S. Census and site visits to Robinson Township by Dr. Peter Wampler and Grand Valley State University's Geology and the Environment students.

The analysis phase included an investigation of historical flooding events in the area. There have been at least five major floods recorded since 1994 as well as other significant floods in the past 30 years. With this in consideration, a preliminary list of recreation deficiencies and needs was developed, and a preliminary set of plan goals and objectives was formulated to fit the possibility of future flooding.

Public input regarding park and recreation needs was solicited a written survey that was distributed to households in the Township. The survey was circulated in the spring of 2011. A survey was passed out at Robinson Township Clean Up day and comments were received and used to update the 2011 Robinson Township Community Recreation Plan. Comments received in the survey were considered in development of the Draft Recreation Plan.

The Park Board reviewed and approved the development of the proposed 5 Year Action Plan and draft recreation plan at a meeting on December 6, 2016. The plan was made available for public comment on March 9, 2017. After the 30-day public comment period all comments and recommendations from the public and Board of Trustees were reviewed at a public hearing on April 12, 2017. The park board reviewed recommended changes and incorporated them, as appropriate, into the final Recreation Plan. The Board of Trustees adopted the plan on April 12, 2017.

The planning process for the 2022 Robinson Township Community Recreation Plan continues with each meeting of the Robinson Township Park Board. Each meeting is posted so that residents may attend to make comments about the park and open space in the Township. Using this input, the Robinson Township Park Board will continue to make applications for future grants and pursue improvements to existing facilities and open spaces.

RECREATION INVENTORY

Over the past ten years the population of Robinson Township has grown steadily. However, the availability of recreational facilities and services has not grown with them. Robinson Township currently has only one Township Park. The neighboring communities provide any recreation that the Robinson Township residents participate in because they currently have no programs. Robinson Township currently owns 45 acres of undeveloped, unused land. Robinson Township's Recreation Inventory is summarized in Table 1.

Township Facilities

Robinson Township Park: Approximately 45-acres of land owned by Robinson Township is located south of the Township Administrative Center on Buchanan Street. The park has one softball field, a soccer field, football field (with scoreboard), a tennis court, a basketball court, covered picnic area, trail system and playground. A well was installed in 2005 to provide onsite drinking water.

State Facilities

D.N.R. Launch Site: Is a 5-acre launch facility on the Grand River at the end of 118th Avenue. The park has two boat launch ramps, 650 feet of river frontage, parking for 60 cars and one primitive pit toilet restroom facility. The launch ramp is owned by the State of Michigan and is maintained by the Ottawa County Road Commission. The Park is used by residents from throughout the County.

Bass River State Recreation Area: Bass River State Recreation Area is approximately a 1,100 acre site located in central Ottawa County. Eventually the Bass River Recreation Area will occupy approximately 3,000 acres and provide the region with nearly three miles of river frontage, a large quarry lake attached to the river and hundreds of acres of natural woodland and floodplain for all forms of casual recreation.

County Facilities

Riverside Park: Is a 64 acre park located on the Grand River on North Cedar Drive just east of 104th Avenue. The park facilities include four boat launching ramps, a 22 feet by 40 feet open shelter structure, two pit toilet restrooms, picnic tables and grills and parking for 14 cars and 43 car/trailer units at the launch ramp and approximately 80 cars at the picnic area. A maintained lawn area with trees, which is available for general use, occupies approximately 1,200 feet of the nearly 4,350 feet of river frontage. The balance of the park, approximately 65 percent, is natural and receives limited use. The park is owned and operated by Ottawa County and is heavily used most of the year. Barrier free access, fishing pier and picnic and pathway improvements are also offered facilities.

Connor Bayou Park: The 142-acre property includes nearly a mile of Grand River frontage and a diversity of natural communities including wetlands, mature mixed hardwood and pine forest, and remnants of prairie plant communities. The site offers outstanding views of the Grand River and expansive wetlands to the north. Amenities and Activities include a woodland cabin, picnic tables, hiking trails and boardwalks, accessible kayak and canoe launch, river overlook decks, fishing docks, rustic toilets, and paved parking area. All facilities, except hiking trails, are universally accessible.

Vacant County Land: There are two parcels of publicly owned land in the Township that are undeveloped and are available for low levels of use such as hiking and in some cases hunting. All of the parcels are included in the Ottawa County Timber Management Program that provides for periodic basic timber management practices such as selective harvesting. The program permits access and hunting on the land; but very few people are aware of the program or the location of the land so these areas are currently unused.

Johnson Street Wildlife Management Area: The Wildlife Management area is a 50-acre parcel of natural woodlands located in the southwest quarter of section 4 on the north side of Johnson Street.

Robinson Forest: There are 80 acres of mixed tree covered land at the intersection of Sleeper Street and 104th Avenue. Approximately half of this parcel is in a 40-50 year old pine forest managed by the Ottawa County Intermediate School District and monitored by Grand Valley State University as a red pine management demonstration area.

School Facilities

The Grand Haven and Zeeland School Districts provide most of the facilities and program opportunities for recreation for Township residents. There is one elementary school in the Township and it is owned and operated by the Grand Haven School District.

Robinson Elementary School: The school is situated on a 20-acre parcel on the west side of 120th south of Buchanan Street. The school has an indoor auditorium/gymnasium used for school functions, shuffleboard, basketball, volleyball, gymnastics, aerobics, meetings, dinners and nonalcoholic receptions. Outdoor facilities include three basketball goals, five swing sets with slides, one soccer field, two junior softball fields and one small play area with related equipment. The play apparatus and sport fields are scaled for the elementary school user and are not particularly well suited for older age group or general community use. The only restroom facilities are located within the school building and are available only during school hours and on a very limited basis.

Private Recreation Facilities

Four privately owned and operated commercial facilities are available to the paying public in the Township. Three are located on or near the south bank of the Grand River and one is located at the intersection of M-45 and 104th Avenue in the southeast portion of the Township.

Southern Grand Marine (formerly Dick's Landing): Is located on 8.8-acres on North Cedar Drive, has on boat launching site, 78 boat slips and one boat lift for larger boats. Facilities also include a boat storage totaling 11,200 sq. feet and complete bath facilities.

River Haven Marina: Is situated on approximately 3-acres of Grand River frontage at the end of 120th Avenue. This development includes 90 boat slips, two boat launching sites, two modern restrooms and 660 feet of river frontage. The marina is approximately 11.5 miles from Lake Michigan.

Felix's Marina: Developed on a 4.3-acre site, is located on Green Street near Stearns Bayou. Facilities there include approximately 35 boat slips, 4 boat launch sties, approximately 40 primitive campsites with electrical service at 20 of the sites and 4 self-contained pit toilet type restrooms.

Pigeon Creek Golf Course: Developed on a 160 acre site, is located on 120th Avenue. Features all the hallmarks of Michigan links style golf. The course gives all levels of golfers an enjoyable experience offering four different tees to choose from. The course also offers a few risk and reward holes that are sure to get you excited every time you step to the tee. Along with a beautifully maintained course is a 12 tee driving range and 2 practice greens to hone in your golf game before heading out for your relaxing round. Other features are a practice facility and experienced PGA golf professionals for lessons.

Evergreen Golf Course: Developed on 73 acres, is located approximately nine miles southeast of Grand Haven. The challenging executive 18-hole course is great for all ages and players. It offers a covered bridge, winding creek, and rustic, natural scenery..

Table 1: Robinson Township’s Recreation Inventory

Facility Name	Grand River Open Space (van Logik/Lumberlost) Township	Robinson Township Park	D.N.R. Launch Site	Bass River State Recreation Area	Riverside Park	Conner Bayou	Johnson St. Wildlife Mgt. Area	Robinson Forest	Robinson Elementary School	Southern Grand Marine	River Haven Marina	Felix's Marina
Ownership		Township	State	State	County	County	State	County	State	Commercial	Commercial	Commercial
Acres		45	5	1,100	64	142	50	80	20	8.8	3	4.3
Playground		X							X			
Open Shelter		X			X							
Open Lawn	X	X		X	X							
Softball Field		1							1			
Soccer Field									2			
Junior Softball Field												
Trails		X		X	X	X				1	2	4
Boat Launch			2	1	4					78	90	35
Boat Slips										1		
Boat Lift										X		
Boat Storage					1							
Fishing Pier												
Drinking Fountain		X										
Portable Restroom		X										
Pit Restroom			X		2							4
Modern Restroom												
Gymnasium (Indoor)									X		2	
Bath Facilities										X		
Basketball Court (Outdoor)		X							1			
Tennis Court		X										
Kayak Launch			X	X								X
Kayak Rental												X
Picnic Area		X	X		X					X		X

Township Recreation Programs

Robinson Township administers and sponsors a few recreational programs of its own. In addition it participates in the financial and administrative support of a variety of programs that involve the residents of the community. Summer recreation, athletic programs and art and craft programs are examples of this participation.

The programs that account for the greatest number of participants are the organized sports and programs from agencies such as the Grand Haven School District in conjunction with Northwest Ottawa Recreation Authority. NORA serves as primary sponsor with Ferrysburg, Grand Haven Township, Grand Haven City and Robinson Township, all making financial contributions to subsidize costs for area-wide participation. The sponsoring communities also participate as member representatives for planning and program approvals. Robinson Township is allocated two positions on the Board. Programs are primarily held at Grand Haven facilities with participation depending on the types of activities offered. Robinson Township schedules the majority of the sporting projects in the Township Park.

Generally, Robinson Township resident participation averages between 5 and 20 percent of total attendance depending on the type of recreation. Limited participation programs are those that appeal to special interest groups such as swimming specialties, tennis and special instruction activities. They normally draw from four to over twenty Township participants. The more popular programs like open swimming, softball, soccer, football, volleyball and basketball that have league type involvement draw larger numbers of Township participants. These activities average approximately fifteen residents per activity with participation in open swim, open gym and some league activities attracting over seventy Township residents in a season.

Robinson Township residents also participate in programs provided by the City of Zeeland. The main attraction is the Little League Baseball Program that draws from a wide area around Zeeland. The actual numbers of Township participants in Zeeland programs is not known, however estimates range from thirty to over fifty people. Some program activities include football, baseball, basketball, swimming and equestrian.

As mentioned earlier, Robinson Township contributes funding toward the Grand Haven Programs. The funding in the 2015-2016 year was approximately \$11,642.00. The township will continue to participate throughout the term of this Plan and into the future with both facilities and programs.

GOALS, OBJECTIVES, AND ACTIONS

Recreation **goals** establish the long-range recreation policy for Robinson Township. Short-term recreation **objectives** are general efforts that are intended to help achieve recreation goals. Recreation **actions** are specific measures that implement the recreation objectives. **Physical characteristics** are the features of the land that are being affected by the goals. **Demographic characteristics** are the Robinson Township population features that are being affected by the goals.

GOAL 1: Plan, fund, and make improvements to Robinson parks and open spaces

OBJECTIVE: Increase interest and usage of township recreation facilities.

POTENTIAL ACTIONS:

- Develop additional interpretive facilities near the scenic areas such as overlooks, trails, and benches.
- Preserve and document Robinson Township history through protection of historic places, documentation, signage, and storage.
- Miscellaneous improvements to Robinson Township park to increase park usage such as signage, fencing, parking, etc.

PHYSICAL CHARACTERISTICS:

Robinson Township park is located near the Township offices on sandy soils with rolling topography typical in the relic dunes of the region. Vegetation is mixed deciduous with several areas of maintained grass and sports fields. Open space areas are typically being managed for white pine and native vegetation in coordination with Ottawa County Parks.

DEMOGRAPHIC CHARACTERISTICS:

There are no residents in the open space or park properties.

GOAL 2: Plan, develop, or support additional pedestrian and bicycle paths that showcase natural wetlands, woodlands, and open space in the township.

OBJECTIVE: Provide paths to allow non motorized access to the Grand River and other wetland and wooded areas for wildlife viewing and hiking. A conceptual drawing of this type of development along the Grand River is shown in Appendix B.

POTENTIAL ACTIONS:

- Identify land high enough to support trail ways along the Grand River and through wooded areas.
- Develop raised wooden paths in lower, wetter areas and gravel or wood chip covered trails in dryer areas for hiking and skiing. Eradicate invasive species and restore natural wetland function in the area adjacent to the Grand River near Van Lopik and Limberlost.

- Explore to connect bike paths between Robinson Township and Grand Haven.
- Improve bike lanes along major roads when possible.
- Maintain and improve the exercise path along the outer perimeter at Robinson Park.

AFFECTED DEMOGRAPHIC AND PHYSICAL CHARACTERISTICS

Physical Characteristics

Water and Soil: Affected in the same manner as previous goal.

GOAL3 : Increase Uninterrupted Open Space and Greenways In Floodplains Along The Grand River

OBJECTIVE: Reclaim agricultural and residential land that will remain undeveloped to allow natural flooding and river function. Establish open space area and riparian comparable to the conditions prior to land use change to residential and agricultural plots.

POTENTIAL ACTIONS:

- Identify and acquire land that falls within the 100-year floodplain of the Grand River in Robinson Township.
- Take advantage of opportunities as they arise to acquire additional green space.

AFFECTED DEMOGRAPHIC AND PHYSICAL CHARACTERISTICS

Demographic Characteristics

Residencies:

•There are many properties within the 100-year floodplain of the Grand River along the northern border of Robinson Township, including properties along Limberlost Lane and Van Lopik Lane, land near the Bass River. Some of these properties were acquire in 2005 as part of a FEMA Grant (SEE ROBINSON TOWNSHIP PRE-DISASTER MITIGATION GRANT PROPERTY ACQUISITIONS MAPS—Last two pages of the plan.)

Michigan Department of Transportation (MDOT) Properties:

- There are 6 MDOT Properties along Limberlost Lane that have been acquired for a the Grand River crossing (M-231).

Physical Characteristics

Soil:

- Hydric Soils: Ad, Ah, Ak, Bu, Bv, By, Cc, Cm, Ed, Gd, Gl, Gm, Gn, Hg, La, Ls, Me, Pn, Pr, Sm, Sn, Tc, To, Wa, Wm, and Wt. Areas composed on these types of soils were classified as wetlands or flood-prone lands. Therefore, lands composed of these types of soils are not considered suitable lands to support engineered structures.
- Non Hydric and Hydric Mixed Soils: AlA, AmB, ArB, AsB, BeA, BeB, BlA, BlB, BpA, BpB, Ce, CnB, GeA, GeB, IoA, IrA, IsB, KnA, KnB, KoA, KoB, MhA, MnA, MnB, NeB, NwB, RcA, RcB, SeA, SeB, Sh, and WsA. Since these soils contain low amounts of hydric soils they are not considered at risk for flooding and therefore are suitable to support engineered structures.

Non Hydric Soils: Non-hydric soils are classified as BoB, BoF, BrA, BrB, BrC, ChB, ChC, CrB, CwB, DpB, DpD, DpF, FoB, Gr, ClB, HlC, KaC, Lb, Ma, McA, McB, McC, MmB, MmC, MoB, MoC, MoD, MoF, MrA, MrB, MrC, MtB, MtC2, MtE2, MuD3, MuF3, NeC, NeD, NeF, NsC3, NsD3, NsE3, NsF3, OsA, OsB, OsC, OsD, OwB, RsB, RsD, RsF, Sd, SpA, SpB, SpC, SsD, SsE, SsF, TsB, UIA, UIB, UIC, and WuC. These areas are not considered to be at a risk for flooding, but are not developed due to some other reason. To see the distribution of these soil types across Robinson Township see the soil survey map in Figure 3 (page 16).

Water:

Based on the soil map survey the following soil types: Ad, Ah, Cm, Gd, Gl, Gm, Gn, Me, Sm, To, and W are under the most concern for potential flooding. The predevelopment conditions along the Grand River at Limberlost and Van Lopik can be seen in the 1938 Arial Photo (figure 4).

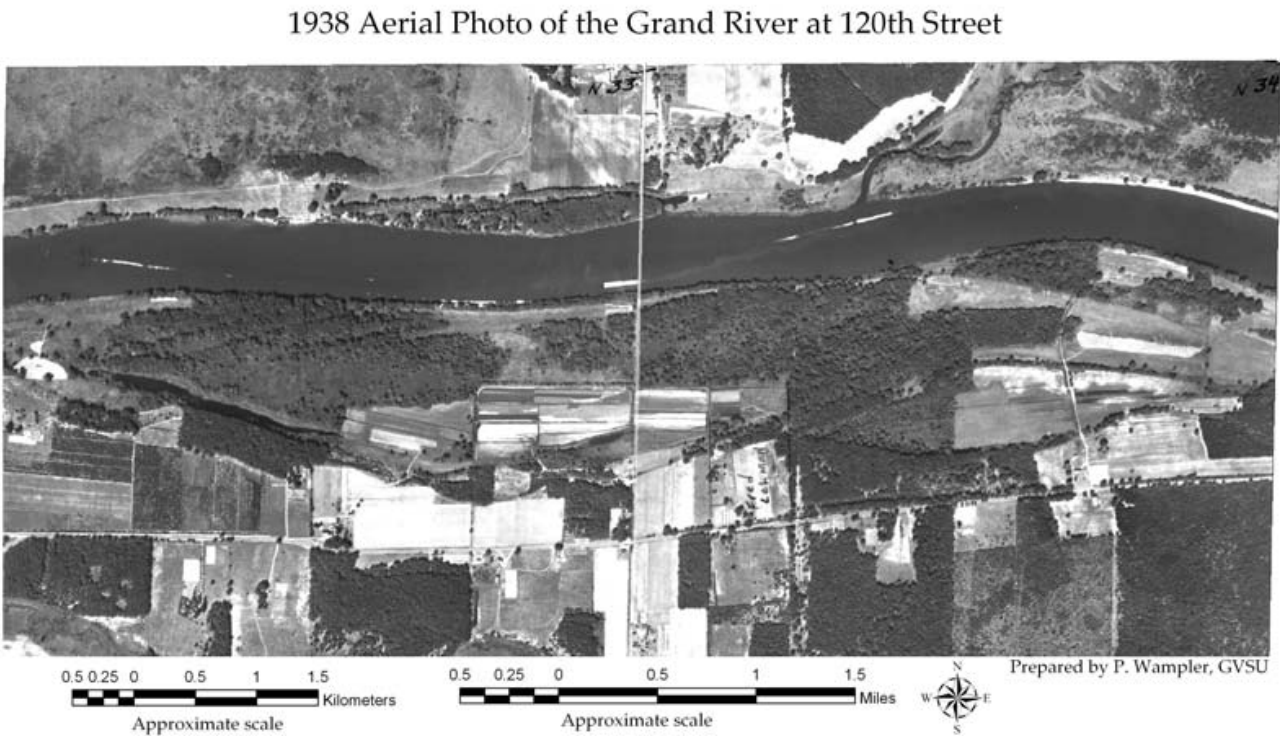


Figure 4: Robinson Township 1935 Arial Photo

- Several different types of public water systems supply Robinson Township. Water utilities for the northwest quadrant of Robinson Township are provided by the Northwest Ottawa Water System (NOWS). This water service exists through an intergovernmental agreement with Grand Haven Township. Two water mains run through Robinson Township to provide water for the city of Grand Rapids. Some residents in Robinson Township are supplied with water from the City of Grand Rapids through connections to these two large water mains. However, approximately 95% of the population acquires their water needs through wells.
- The Grand River is the largest River in Michigan. Ottawa county and other counties adjacent to the Grand River are acquiring land to increase the greenway along the Grand River. The greenway provides floodplain functions as well as a continuous pathway for wildlife.

Soils Robinson Township

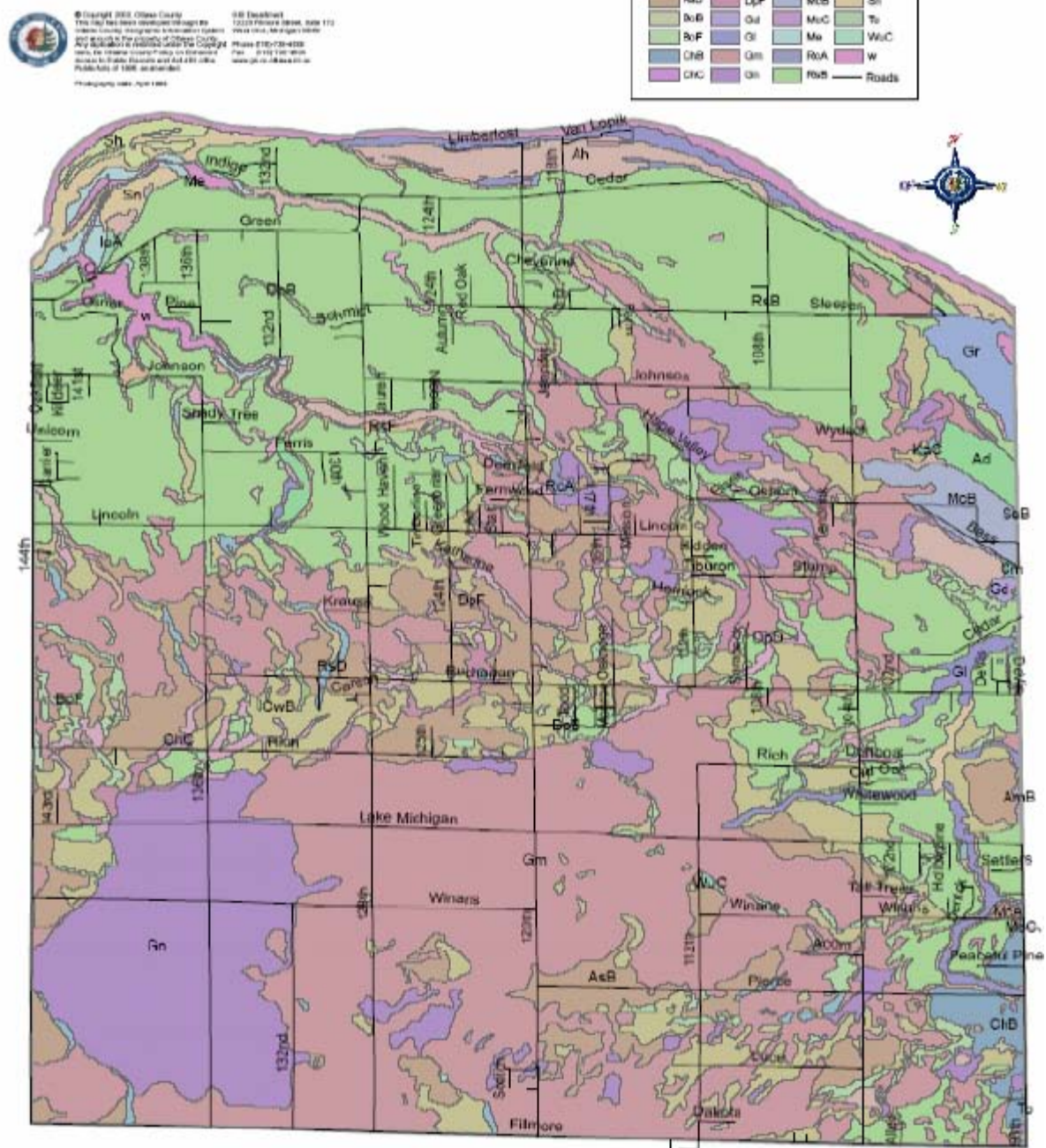


Figure 3: Robinson Township Soil Distribution
(Robinson Township Hazard Mitigation Plan, 2005)

ACTION PROGRAM

The plan actions stated in the Goals, Objectives, and Actions section represent acquisition projects or recreational facility development. The following goals and objectives were structured to fulfill needs and to serve as guidelines for development of the five-year action and financial programs. The plans are intended to be flexible enough to be responsive to changing attitudes and trends and to accommodate opportunities as they occur.

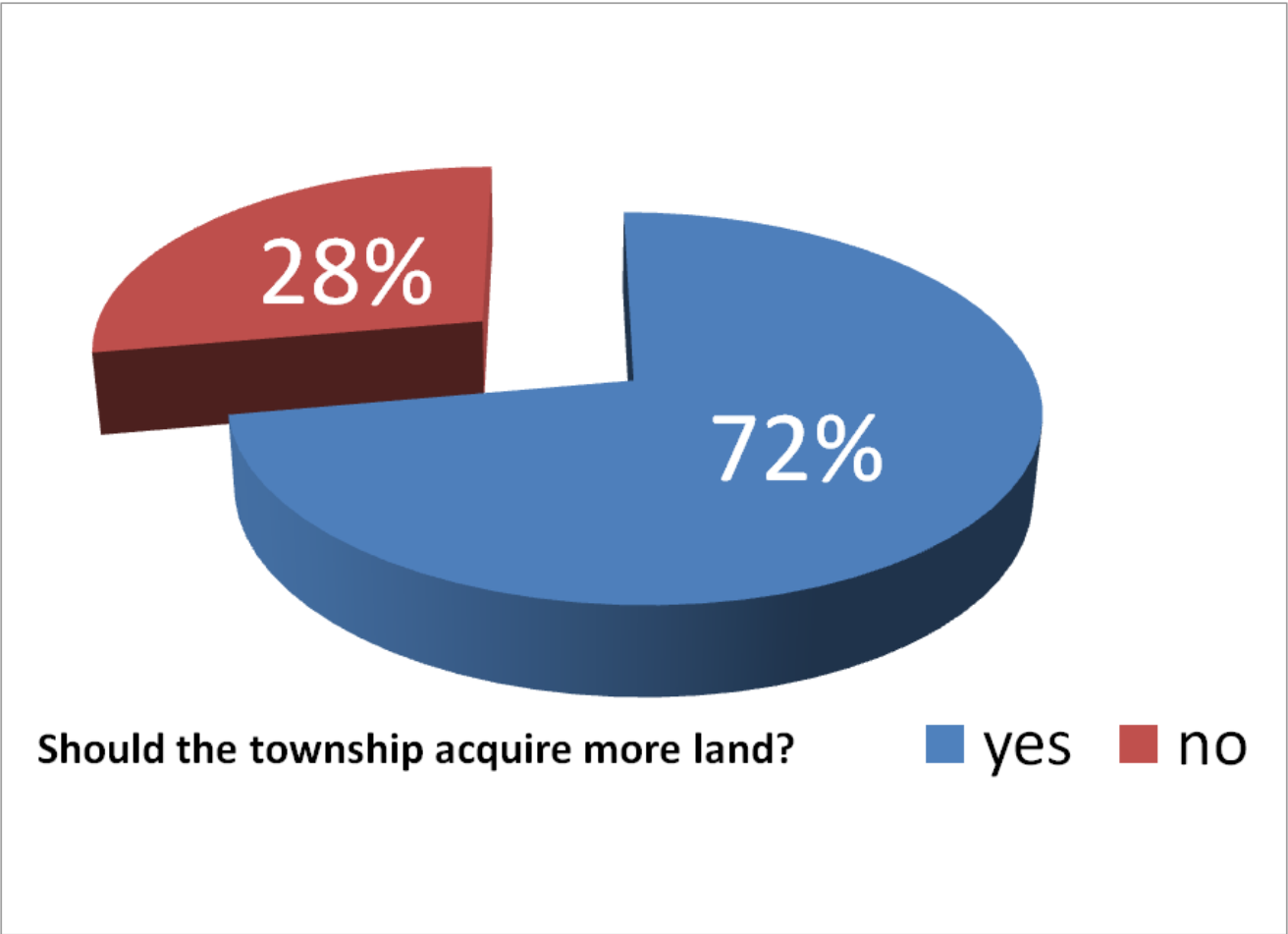
- Acquisition and development of greenway and open space along Grand River. The land has proven to be unstable for agricultural and residential uses due to the high risk of flooding in some areas.
- Developing a trail way system will give the open space a low impact use for the public that will promote safe, meaningful and attractive access throughout the Township, County and region for hikers, skiers, and bikers.
- Preserving and reclaiming scenic, natural, historic and environmentally sensitive or unique areas for appropriate levels of public use and enjoyment.
- Connection of bike paths and lane to existing bike routes into Grand Haven.

It is anticipated that opportunities may arise that could alter the prescribed goals and objectives. However, it is intended that these guidelines remain as priorities even in the event of the introductions of an alternative opportunity that was not anticipated.

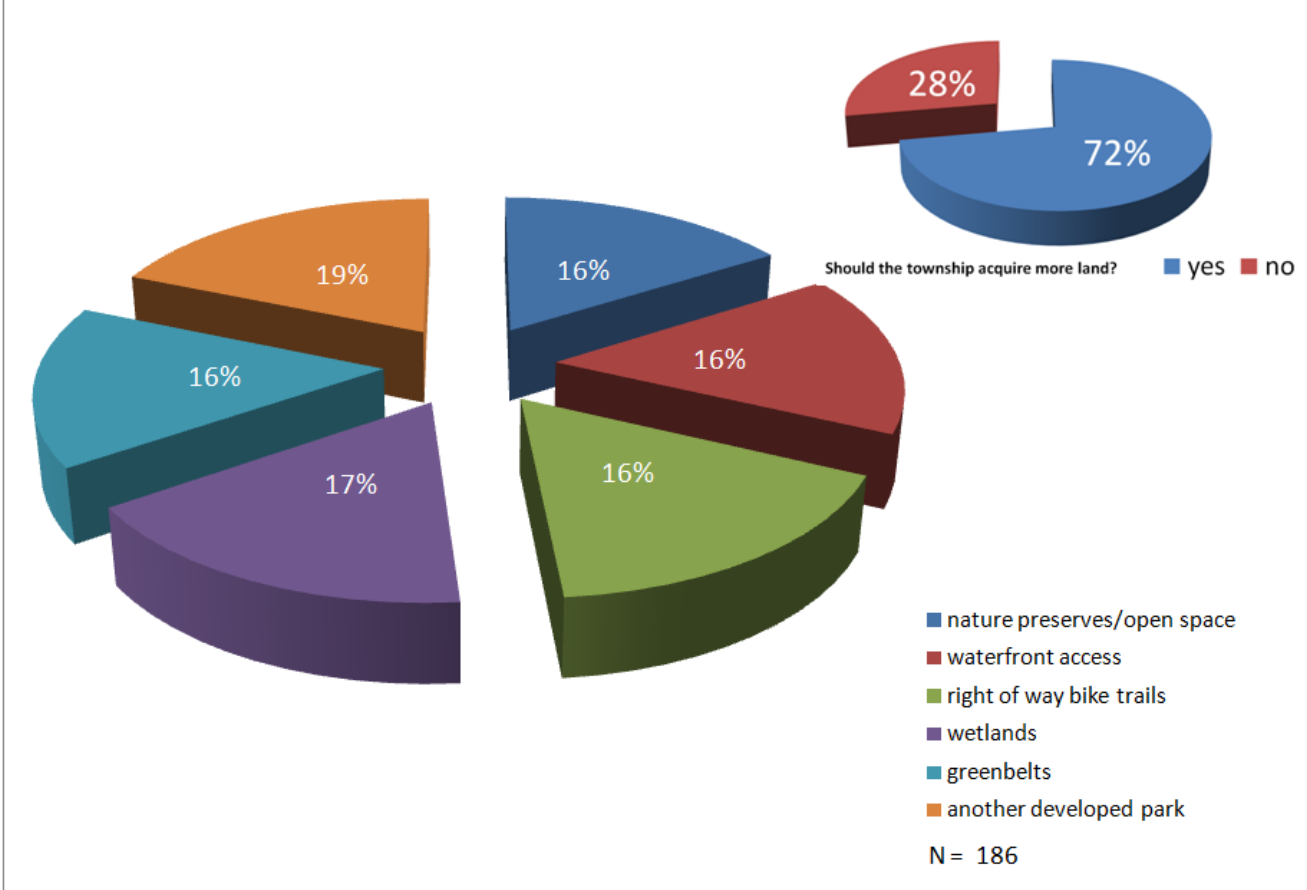
APPENDIX A

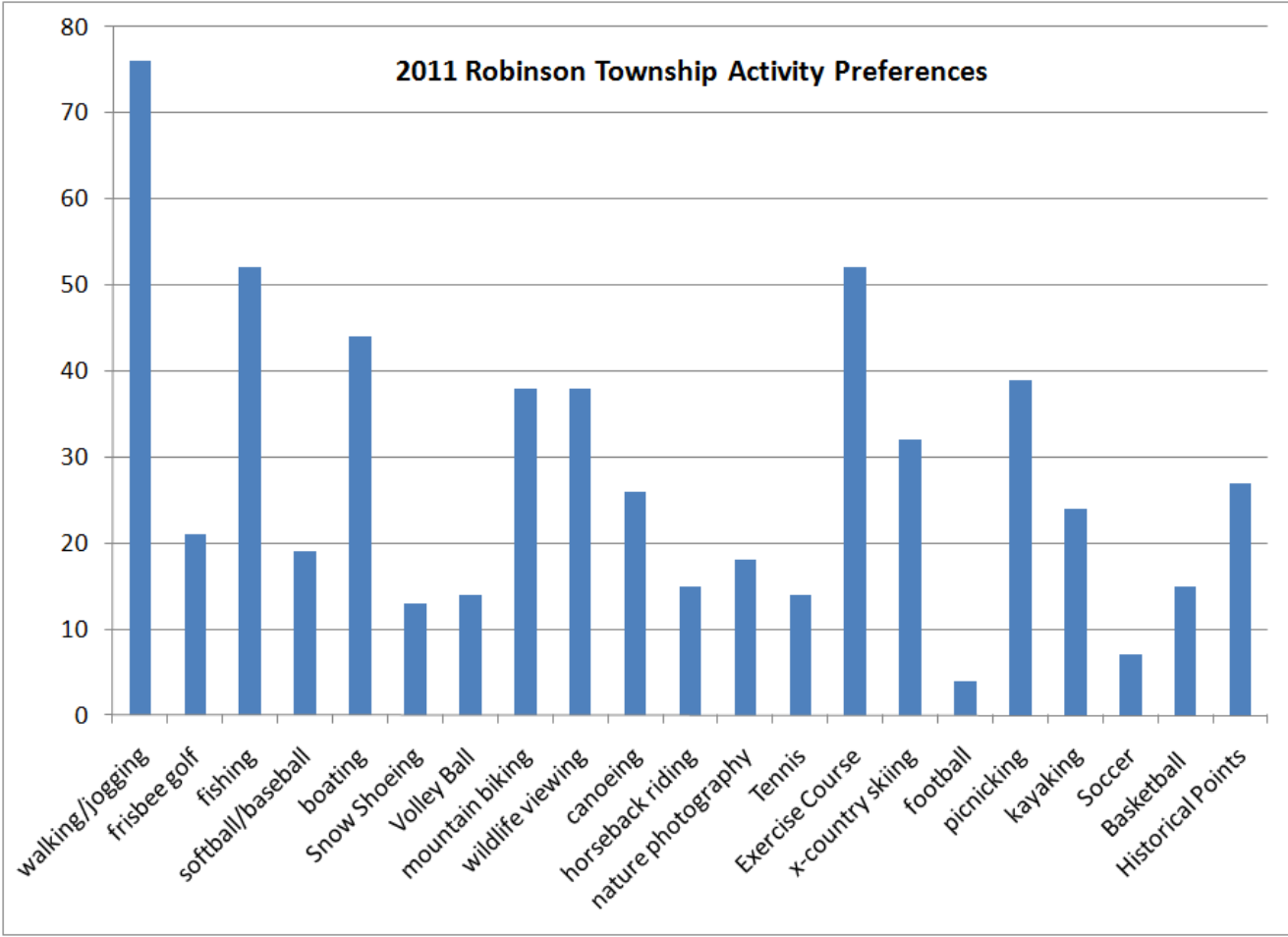
Summary of Citizen Survey Input

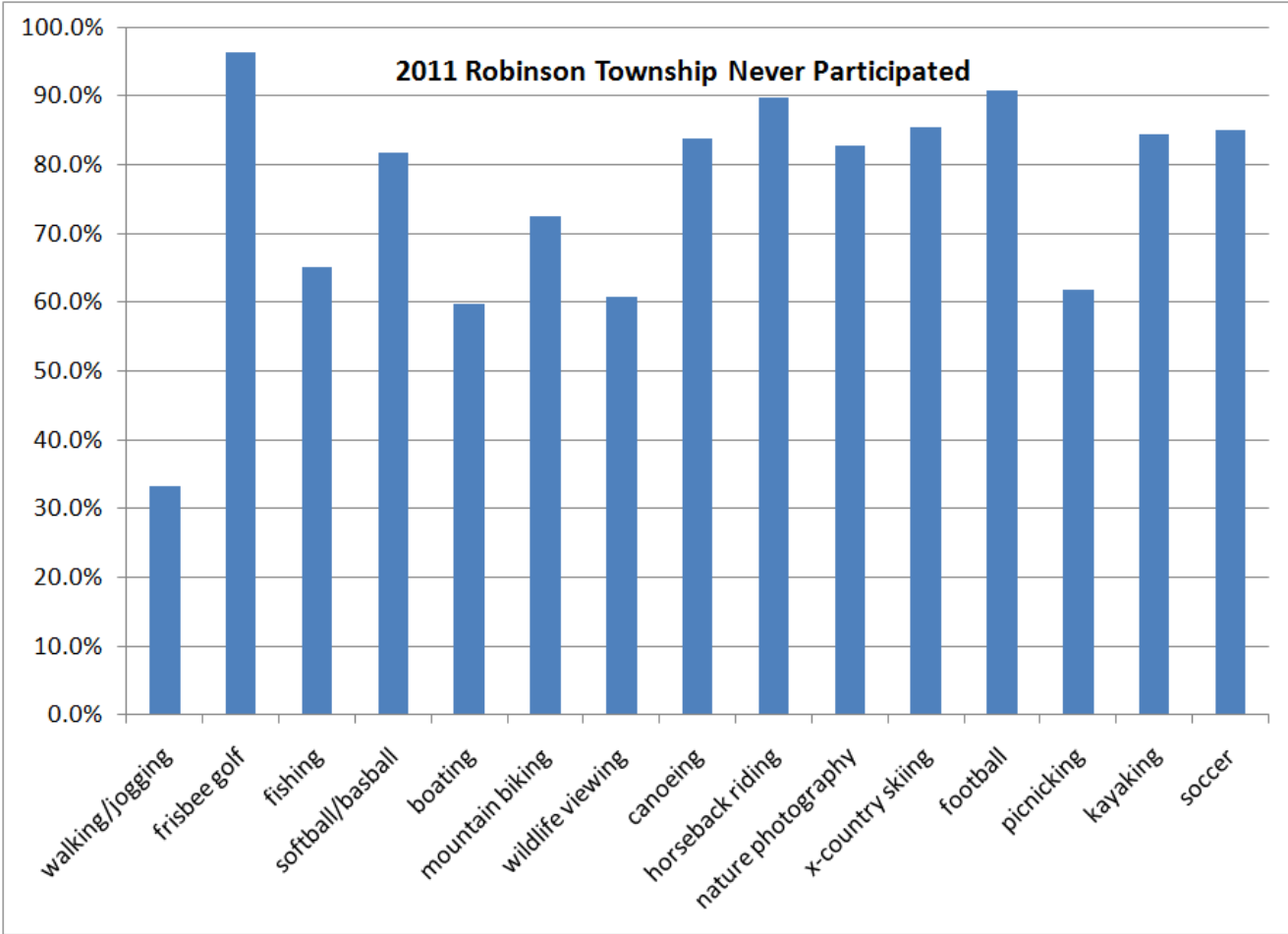
The survey that was given was completed by 186 of the residents of Robinson Township, or approximately 3% of the 2010 population of the township. This shows that more data needs to be collected to gain a better idea what the area residents want. Surveys were not given to children, young adults, and non-homeowners.

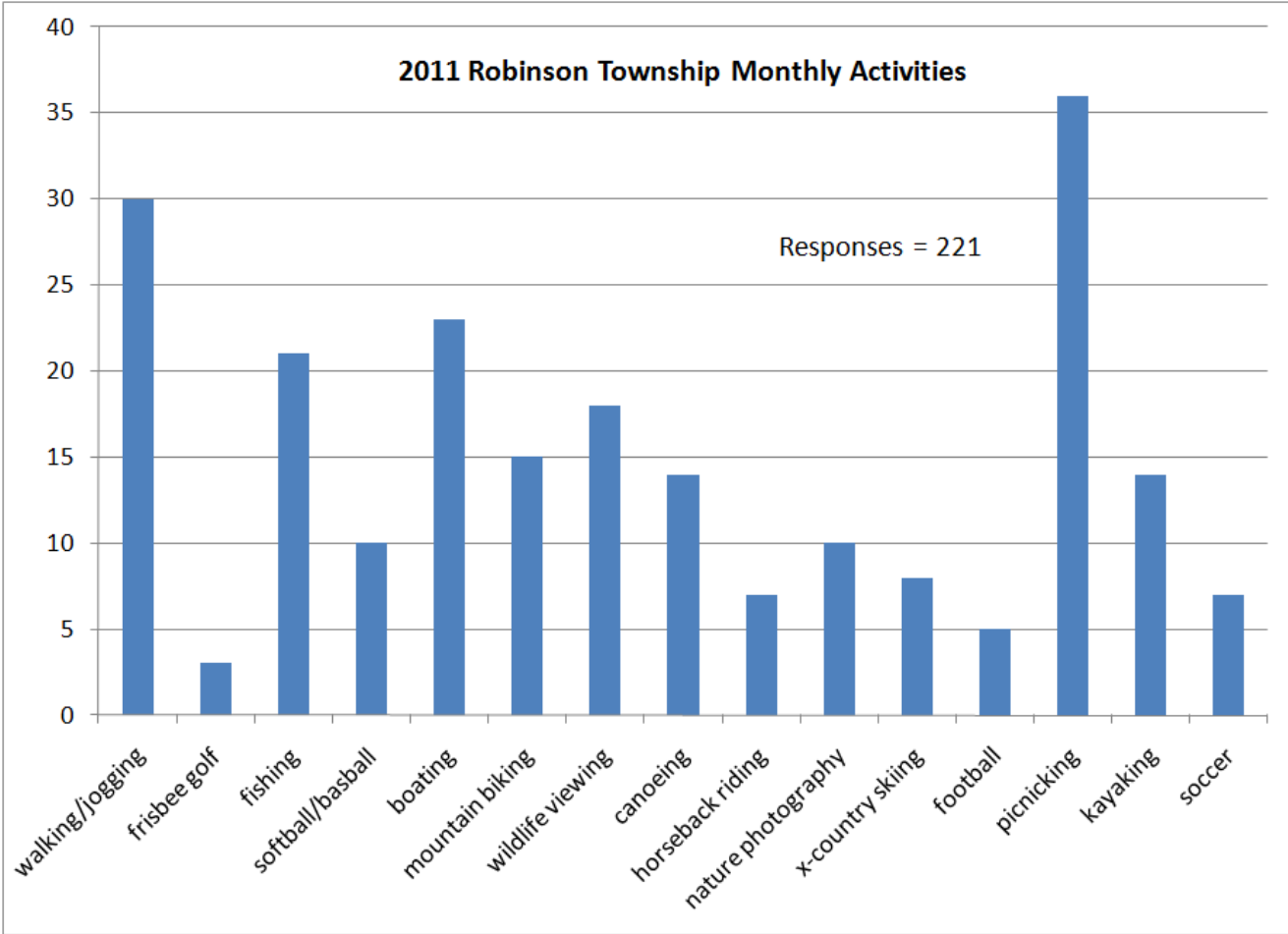


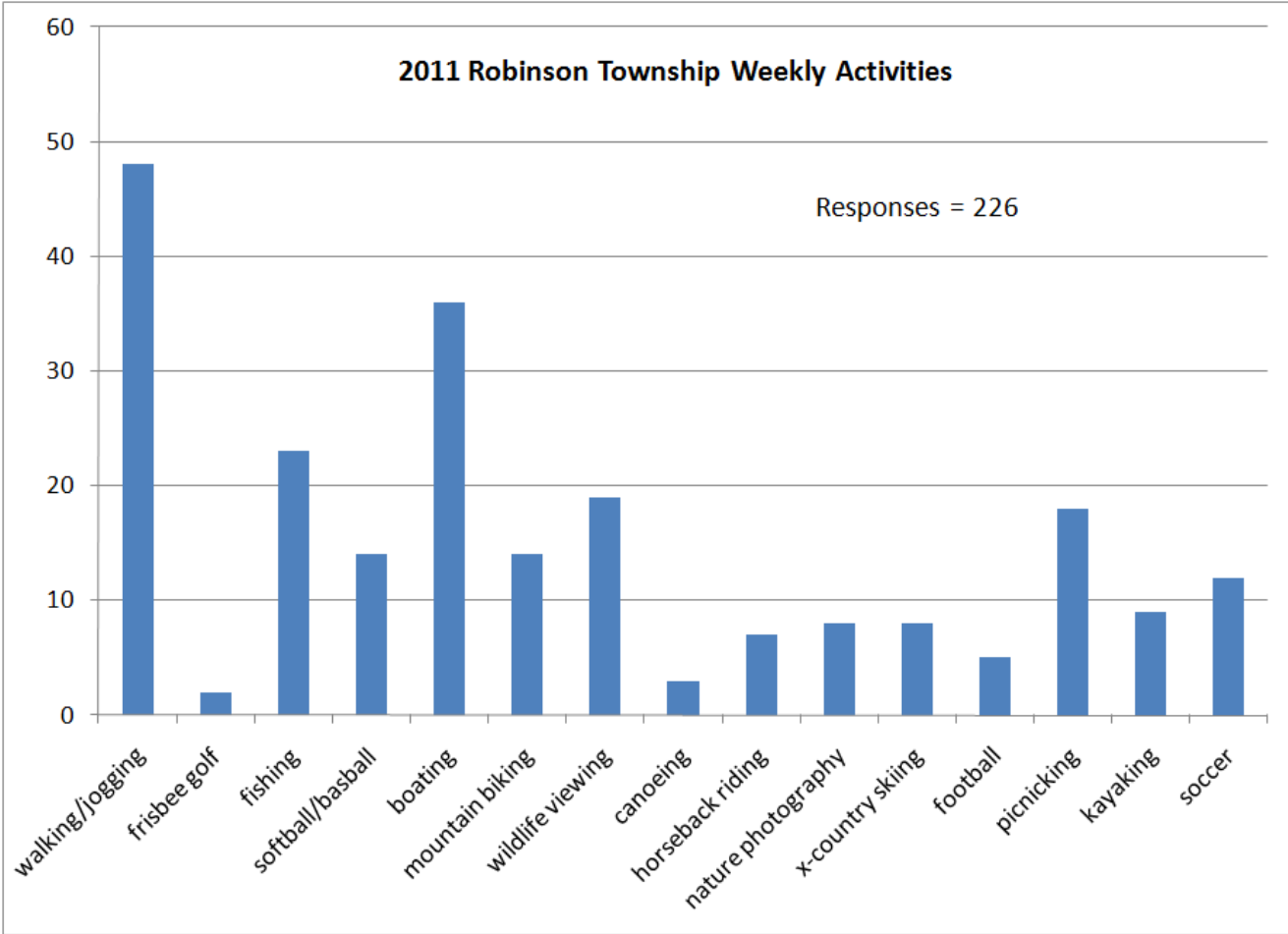
2011 Robinson Township Land Acquisition

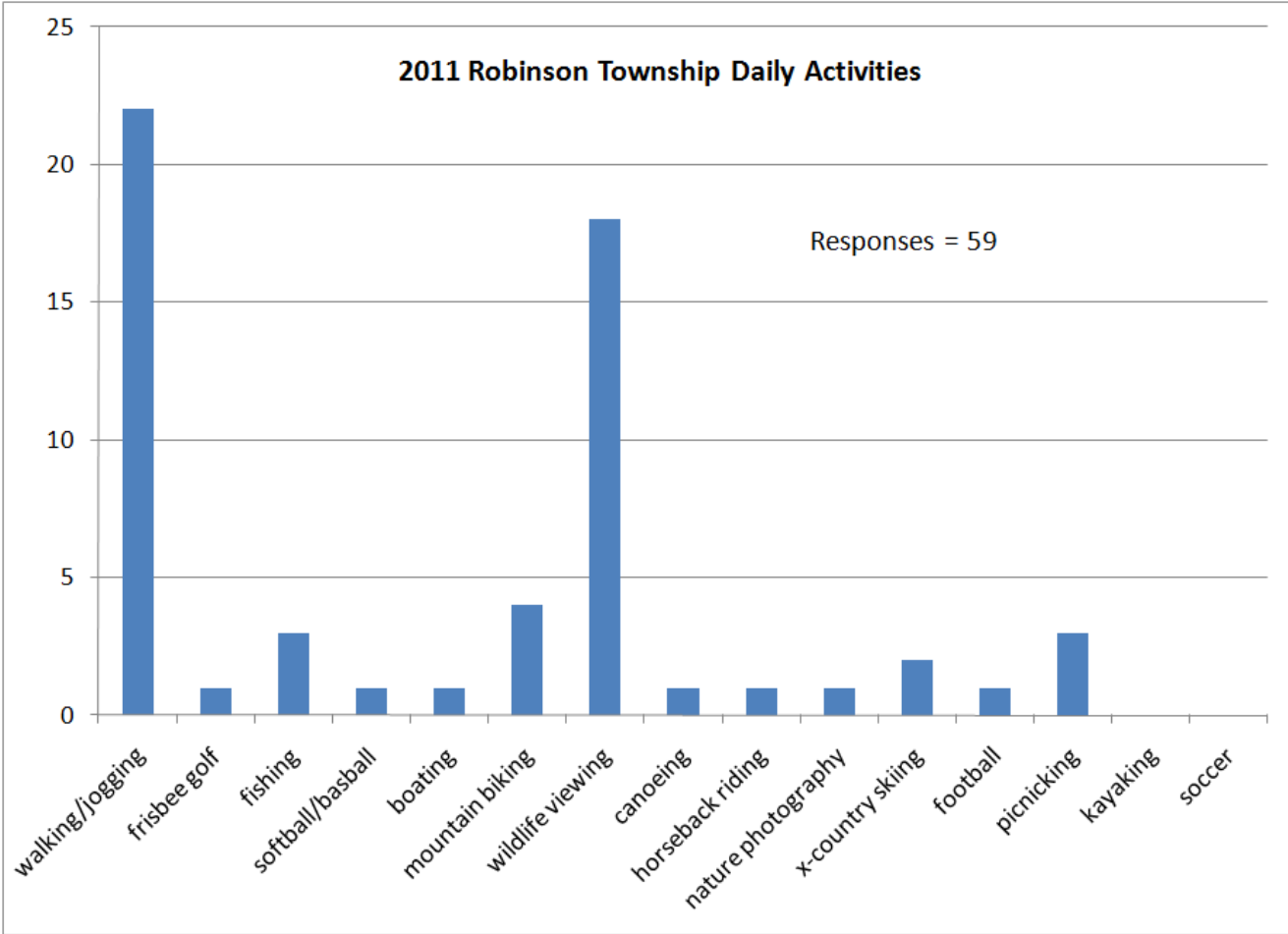




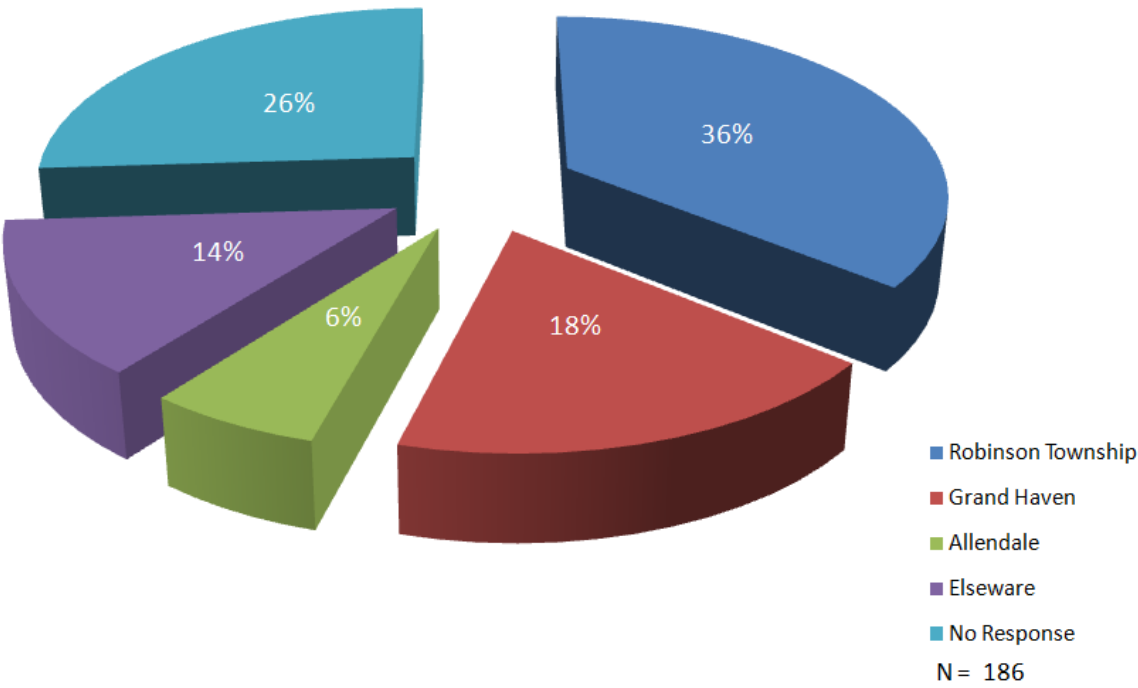




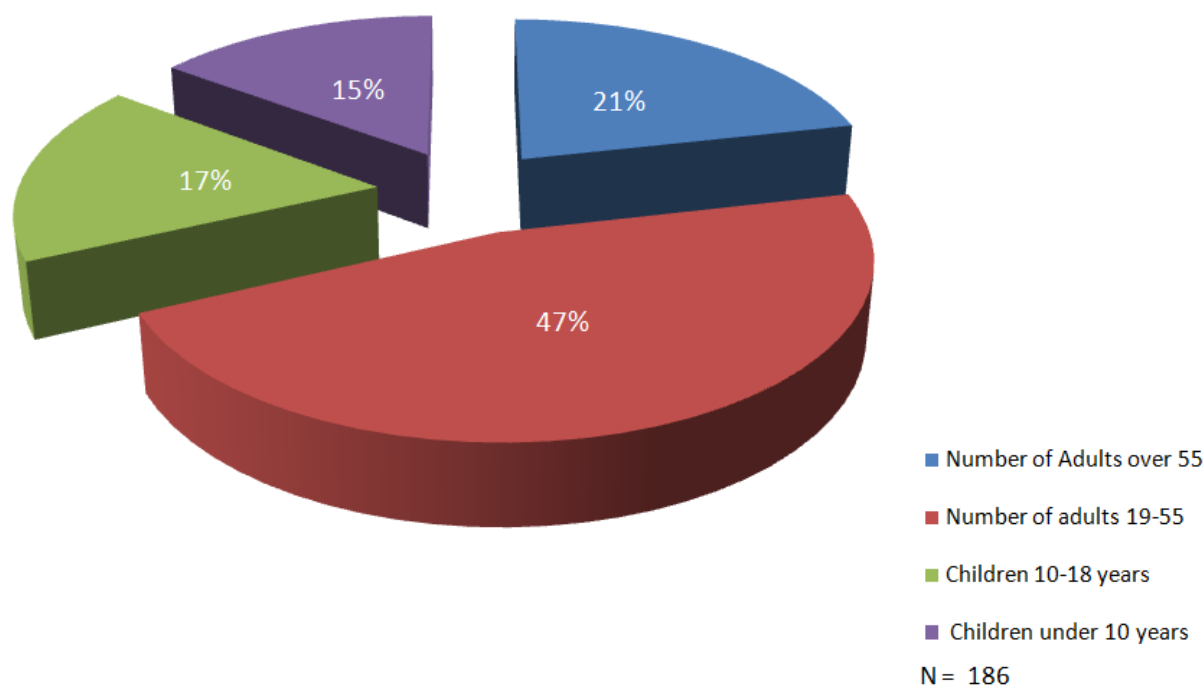




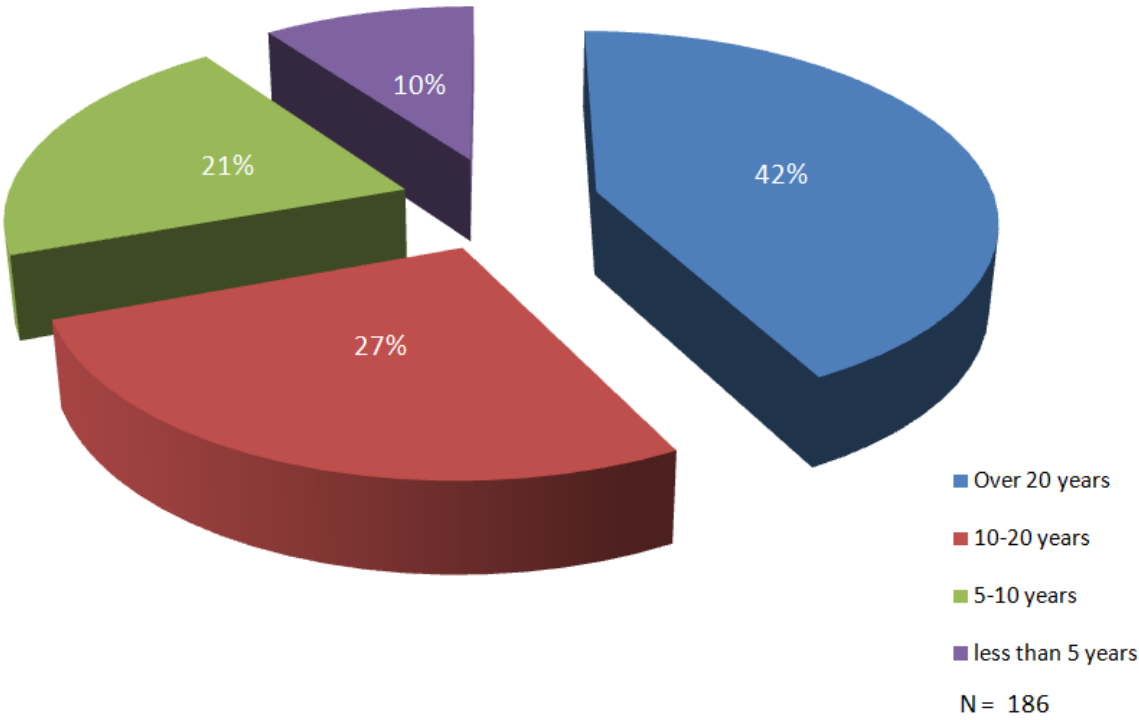
2011 Robinson Township Demographics



2011 Robinson Township Demographics



2011 Robinson Township Residency Duration



Community Survey Example and Written Comments

Apr 04 11 12:06p

Bernice Berens

616-892-6129

p.2

Robinson Township
2011 Park and Recreation Survey

145

Dear resident,

We are in the process of updating our Park and Recreation Plan and would like to get your input as to what activities you like to participate in and what you would like to have available in the township. Please take a few minutes to complete this survey a Park Board representative will collect it further up the Spring Clean-up line.

1. Household Residents

- a. Adults over 55 _____
b. Adults 19 – 55 3
c. Children 10-18 _____
d. Children under 10 _____

2. Resident of the Township

- a. Over 20 years _____
b. 10-20 years _____
c. 5-10 years X
d. less than 5 years _____

3. Last year did your family participate in any of the following activities?

- (Frequency) 1.Daily 2.Weekly 3.Twice/week 4. Monthly 5. Never
(Location) A. Robinson Township B. Grand Haven C. Allendale D. Elsewhere

4-1A Walking/Jogging _____ Mountain biking _____ X county skiing _____
Frisbee golf _____ Wildlife viewing _____ Football _____
Fishing _____ Canoeing _____ Picnicking / play area _____
Softball/Baseball _____ Horseback riding _____ Kayaking _____
Boating _____ Nature photography _____ Soccer _____

4. Which activities would you like to see expanded within or added to our township parks?

X Walking/Jogging _____ Mountain biking _____ X county skiing _____
Frisbee golf _____ Wildlife viewing _____ Football _____
Fishing _____ Canoeing _____ Picnicking / play area _____
Softball/Baseball _____ Horseback riding _____ Kayaking _____
Boating _____ Nature photography _____ Soccer _____
Snow shoeing _____ Tennis _____ Basketball _____
Volley ball _____ Exercise course _____ Historical points _____

5. Should the Township acquire more land for future use? _____ Yes X No
If yes, please rank your preference: 1 being the most important to 9 being the least important.

- _____ Nature preserves/open space _____ Wetlands
_____ Waterfront access _____ Greenbelts
_____ Right-of-way bike paths _____ Another developed park

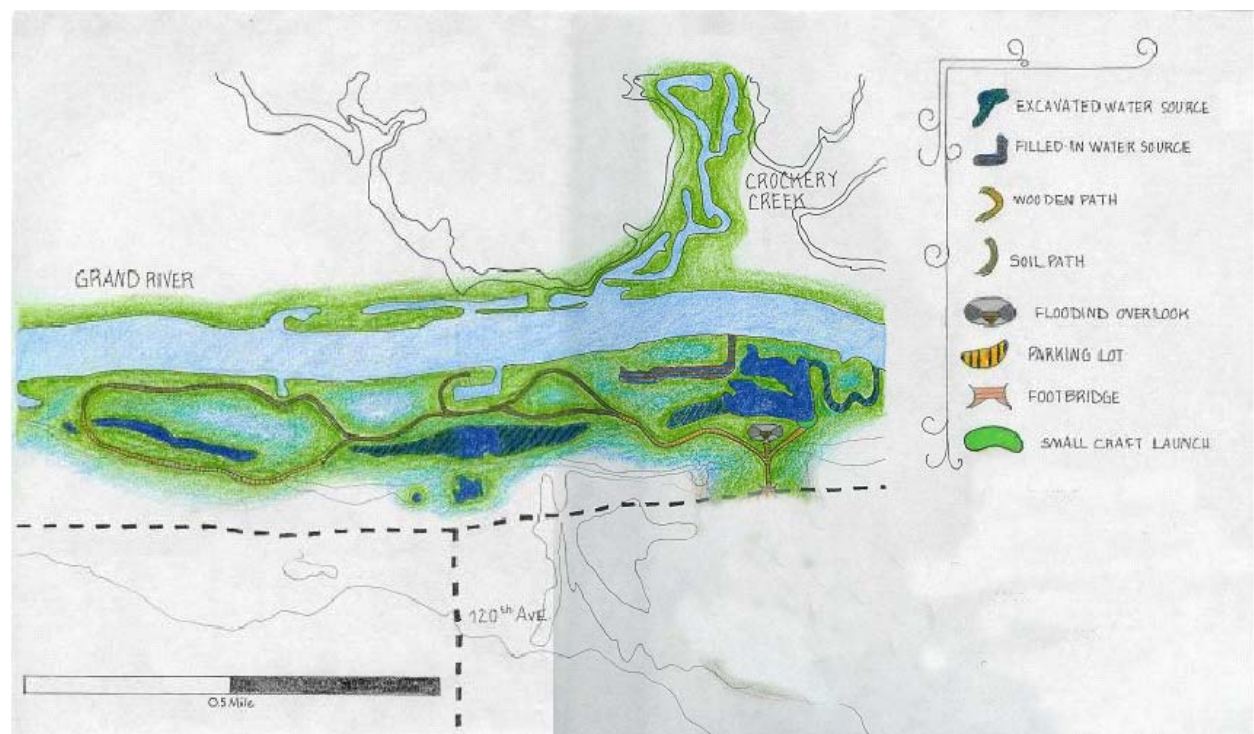
6. Comments

would like to see more bike paths

COMMENTS FROM 2011 PARK SURVEY

1. Ottawa County should not plow snow in front of Riverside Boat Launch
2. Don't let any sub-divisions come into Robinson.
3. Thank you for asking.
4. Don't do a lot of outdoor activities.
5. Have never used the park.
6. Music in the park.
7. Robinson Park is very clean, Thanks.
8. Thanx—Good job on survey
9. Acquire land with environment sensitive issues for hiking and picnic parks, not development.
10. Road biking is hugely popular in Ottawa County. Race trails and road aprons are critical to encouraging serious bikers—Road biking/rail trails.
11. Like the concerns and farmers market especially.
12. Nice to have bike paths (paved) like Grand Haven roads.
13. Land for hunting
14. Like current park- use it as least a little & I will continue to use
15. Robinson Township park is very nice for occ. use.
16. Would be great to have a bike path that joins to Grand Haven paths.
17. We love this area a lot because of the nature, Thank you
18. Would like to see more bike paths.
19. More area to launch your boats.
20. Build fence in dog park.
21. Would like more development/access with state and county parcels in this township.
Restroom at existing facility and possible sledding hill.
22. Robinson Township is doing a great job
23. Great job Robinson Township.
24. I think we have (state & county & local) many pedestrian friendly Rec. Area, what about some power sports (like Silver Lake).
25. I think the parks are good as they are, different parks provide for most of these activities already.
26. I Love Our Area.
27. I like to know or see about Senior Softball.
28. Need more bike paths/need X-county skiing trails like Pigeon Creek.
29. Tar Roads.
30. Clean up day should be twice a year like always, Thanks for helping out township stay clean
31. Improve the parks we have.
32. Need Bike Path down Lincoln.

APPENDIX B



Concept Drawing of Park

